

MASCHELLMAC OFFICE COMPLEX

King of Prussia, PA



FEATURES & AMENITIES

- Award-winning landscaping and spectacular window lines
- Nestled within a picturesque park setting
- Fiber optic connectivity
- Mini-market
- Access to fitness and conference facilities at Freedom Business Center
- Access to the Linear Park located on First Avenue
- Electric vehicle charging stations
- Online tenant resource system
- Various shopping, dining, and hotel options in the immediate vicinity; including the King of Prussia Mall, one of the largest shopping malls in the country with over 400 stores and restaurants
- Offers immediate access to the Pennsylvania Turnpike (I-276), Schuylkill Expressway (I-76), and routes 202 and 422

Class A Office Campus
Four Buildings Totaling

301,901 SF

for more information:

KATHY SWEENEY-POGWIST
610.832.7743

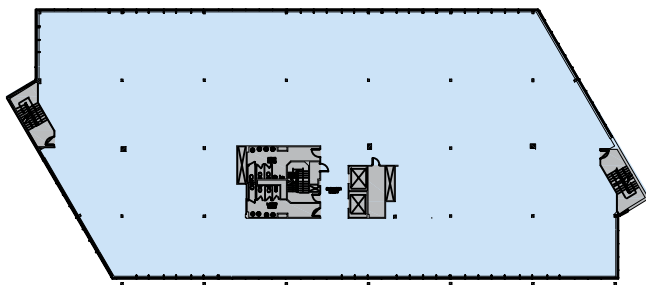
Kathy.Sweeney-Pogwist@bdnreit.com



CAMPUS HIGHLIGHTS

- Recently awarded:
 - Silver Level Sustainability Award
 - Bronze Level Sustainability Award
- First-class property management services provided by the dedicated team at Brandywine Realty Trust
- Maschellmac I, III and IV are Energy Star certified buildings: use on average 35% less energy than typical buildings and release 35% less carbon dioxide into the atmosphere
- Dedicated to sustainability through Brandywine's company-wide program, Brandywine Environments

TYPICAL FLOOR PLAN



Brandywine Realty Trust is one of the largest, publicly-traded, full-service, integrated real estate companies in the United States with a core focus in the Philadelphia, PA, Washington, D.C., and Austin, TX markets. Organized as a real estate investment trust (REIT), we own, develop, lease and manage an urban, town center and transit-oriented portfolio.



555 East Lancaster Avenue
Suite 110, Radnor, PA 19087

www.brandywinerealty.com



for more information:

KATHY SWEENEY-POGWIST
610.832.7743

Kathy.Sweeney-Pogwist@bdnreit.com

